

Canyon Watch Volunteer Guide



Rose Canyon

Distance: 0.75 Miles
Hike Time: 60 Minutes
Difficulty Level: Easy



Program Overview

The ocean is one of our greatest natural treasures, yet it is continually threatened by pollutants from sewer spills and storm water run-off.

San Diego, a city that borders the oldest, largest, and deepest ocean in the world, has over 40 urban canyons that hold 300 miles of public sewer lines. Most of these pipelines have unfortunately exceeded their life expectancy and are often inadequately maintained, making them susceptible to damage that can cause harmful spillover into our local



Once a break in the system takes place, untreated wastewater (the stuff that comes from our washing machines, sinks and toilets) may enter a nearby creek, river or storm drain and travel hundreds of miles downstream, eventually pouring into our coastal waters. Here, it spreads, becomes virtually impossible to contain and harms fragile marine life.



To help keep our waters contaminant free and safe for all, the San Diego Oceans Foundation has teamed up with the Metropolitan Wastewater Department's Sewer Spill Reduction Program to enlist citizen volunteers.

Volunteers are crucial to the Canyon Watch Program by regularly monitoring our urban canyons and reporting potential threats.

What to Look For...

As a Canyon Watch volunteer, you will be responsible for monitoring our local canyons. While patrolling, you should look for leaks, unusual smells and damaged or vandalized manholes. Any findings should be recorded in your 'Canyon Watch Field Report' and submitted online after your hike is completed. **Immediately report any active sewer spills or foamy discharge to the Sewer Emergency Hotline (619) 515-3525.**

Manholes

Manholes are typically painted lime green for easy identification. Check that all manholes are secured with a locking bar or recessed bolts and that they are clear of vandalism and other damage.



Unusual Smells

Manholes in proper working order should not emit odors. Foul smells are a sign of possible leaks or spills and should be included in your 'Field Report', but do not warrant a call to the Emergency Sewer Hotline.



Sewer Leaks & Foamy Discharge

Any sort of foamy discharge or active spill should be reported **immediately** to the Sewer Emergency Hotline! It is crucial to record the number painted on the manhole structure and GPS coordinates, if available, so you can accurately report its location.



Exposed Sewer Lines

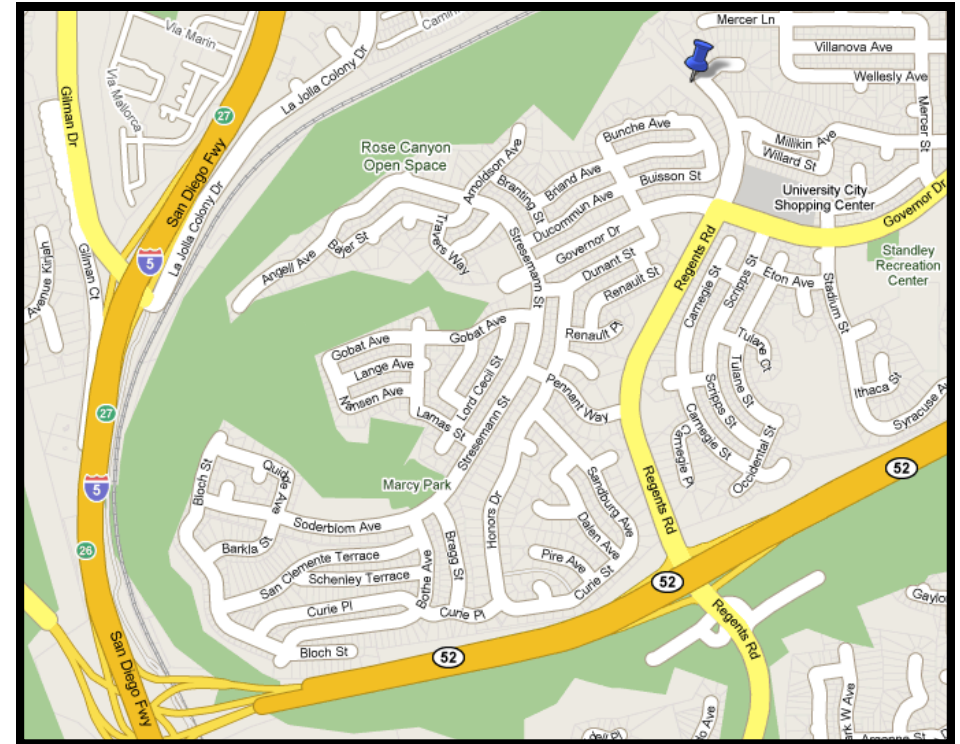
Pipelines should be buried underground. If you come across sewer pipes that have been exposed due to erosion, please let us know. Exposed pipes are more likely to crack and leak and should be reported.



Rose Canyon

Regents Rd. & Lahitte Ct.
San Diego, CA 92122

Take I-5 to Hwy 52 and head east. Exit Regents Rd and go left (north). Park at Regents & Lahitte.



The trailhead begins where Regents Rd ends.
Note: Be watchful of bobcats, coyotes and poison oak.

Manhole Guide

The following information will lead you to the various manholes throughout this canyon. Please read the 'Hiking Safety Tips' available at www.sdoceans.org before beginning your hike.

Due to vegetation growth and other, unforeseen changes, some manholes may not be immediately visible. If a manhole cannot be reached due to construction or certain environmental hazards, please make a note of it and move on to the next manhole on your list.



1. Manhole #336
N 32° 51' 19", W° 117 13' 8"

30ft right of trail.
Towards creek, before curve in path.



2. Manhole #337
N 32° 51' 38", W° 117 13' 11"

15ft right of trail (under trees).



3. Manhole #34
N° 32 51' 23", W° 117 13' 17"

20ft right of trail.



4. Manhole #469
N 32° 51' 21", W 117° 13' 23"

Follow path to wooden gate on right. Manhole is at end of path, towards railroad. **This is a sensitive area (only have one group member enter to check).**



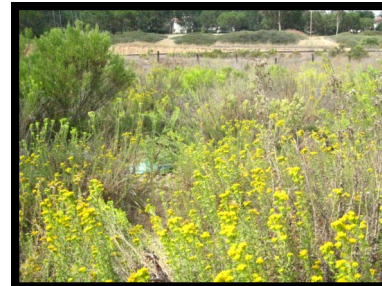
5. Manhole #481
32° 51' 11" N 117° 13' 46" W

Near wooden post. 10ft right of path. Look for green rock on trail.



6. Manhole #243
32° 51' 9" N 117° 13' 48" W

15ft right of trail, past fenced bridge, directly under power lines (in brush).



7. Manhole #482
N 32° 51' 8", W° 117 13' 51"

10ft right of path.
Roughly 100yds from MH #243.



8. Manhole #250
N 32° 51' 2", W° 117 13' 57"

Left of trail (at fork, next to tracks). Stay straight for next manhole.



9. Manhole #483
32° 51' 1" N 117° 13' 56" W

15ft left of trail (in brush).
Very close to MH#250.



10. Manhole #497
N 32° 50' 8", W° 117 14' 0"

Just left of trail. Stand on MH #497 to see MH #83.



11. Manhole #83
32° 50' 8" N 117° 14' 0" W

Can be seen by standing on MH#83 (look left).



12. Manhole #82
N 32° 50' 57", W° 117 14' 1"

10ft right of trail (in brush).
20yds from MH #497 & #83.



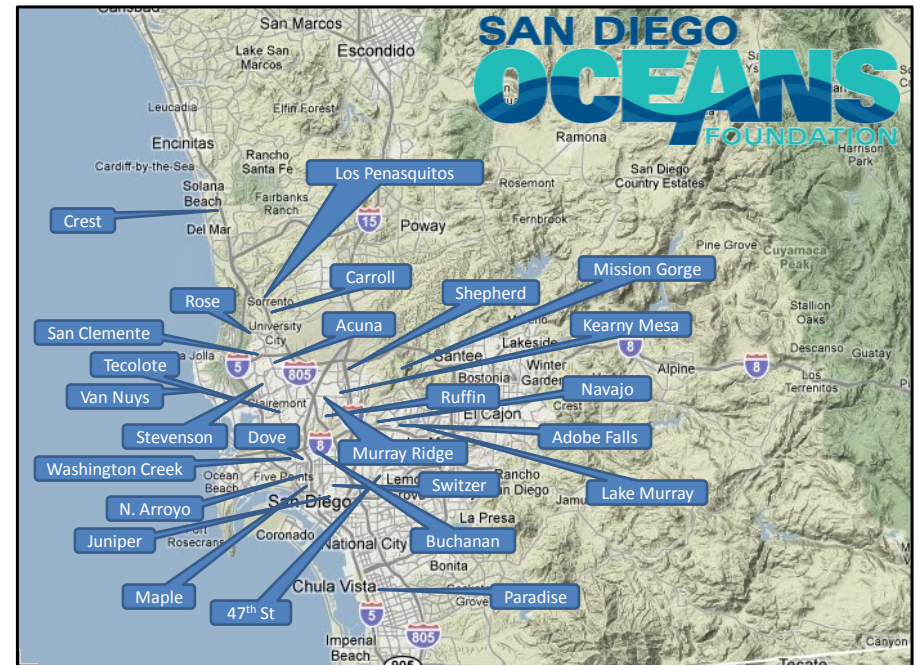
13. Manhole #485
32° 50' 54" N 117° 14' 02" W

10ft right of trail (in brush).

Thank you for monitoring Rose Canyon!

Please be sure to submit your Canyon Watch Field Report online at http://sdoceans.org/pollution_report_2.php within 24 hours of your hike.

Volunteer submissions are the key to early detection and prevention of raw sewage from making its way into our ocean!



Visit www.sdoceans.org to locate guides for other available canyons in San Diego County.

SAN DIEGO OCEANS FOUNDATION

www.sdoceans.org

1875 Quivira Way, C-5 | San Diego, CA 92109
P: (619) 523-1903 | F: (619) 523-1979

Executive Director

John Valencia, john@sdoceans.org

Program and Outreach Director

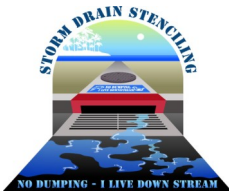
Cheryl Barnes, cheryl@sdoceans.org

Marketing and Development Director

Heidi van Lydegraf, heidi@sdoceans.org

Ocean In Motion Program Coordinator

Zoe Dagan, zoe@sdoceans.org



We rely on donations from people who wish to see the marine environment protected for its intrinsic value, for their enjoyment and for that of future generations.

To support SDOF programs, become a member or make a tax-deductible donation at: www.sdoceans.org.