

# Canyon Watch Volunteer Guide



## Adobe Falls Canyon

Distance: 0.59 Miles  
Hike Time: 30-60 Minutes  
Difficulty Level: Difficult



## Program Overview

The ocean is one of our greatest natural treasures, yet it is continually threatened by pollutants from sewer spills and storm water run-off.

San Diego, a city that borders the oldest, largest, and deepest ocean in the world, has over 40 urban canyons that hold 300 miles of public sewer lines. Most of these pipelines have unfortunately exceeded their life expectancy and are often inadequately maintained, making them susceptible to damage that can cause harmful spillover into our local



Once a break in the system takes place, untreated wastewater (the stuff that comes from our washing machines, sinks and toilets) may enter a nearby creek, river or storm drain and travel hundreds of miles downstream, eventually pouring into our coastal waters. Here, it spreads, becomes virtually impossible to contain and harms fragile marine life.



To help keep our waters contaminant free and safe for all, the San Diego Oceans Foundation has teamed up with the Metropolitan Wastewater Department's Sewer Spill Reduction Program to enlist citizen volunteers.

Volunteers are crucial to the Canyon Watch Program by regularly monitoring our urban canyons and reporting potential threats.

# What to Look For...

As a Canyon Watch volunteer, you will be responsible for monitoring our local canyons. While patrolling, you should look for leaks, unusual smells and damaged or vandalized manholes. Any findings should be recorded in your 'Canyon Watch Field Report' and submitted online after your hike is completed. **Immediately report any active sewer spills or foamy discharge to the Sewer Emergency Hotline (619) 515-3525.**

## Manholes

Manholes are typically painted lime green for easy identification. Check that all manholes are secured with a locking bar or recessed bolts and that they are clear of vandalism and other damage.



## Unusual Smells

Manholes in proper working order should not emit odors. Foul smells are a sign of possible leaks or spills and should be included in your 'Field Report', but do not warrant a call to the Emergency Sewer Hotline.



## Sewer Leaks & Foamy Discharge

Any sort of foamy discharge or active spill should be reported **immediately** to the Sewer Emergency Hotline! It is crucial to record the number painted on the manhole structure and GPS coordinates, if available, so you can accurately report its location.



## Exposed Sewer Lines

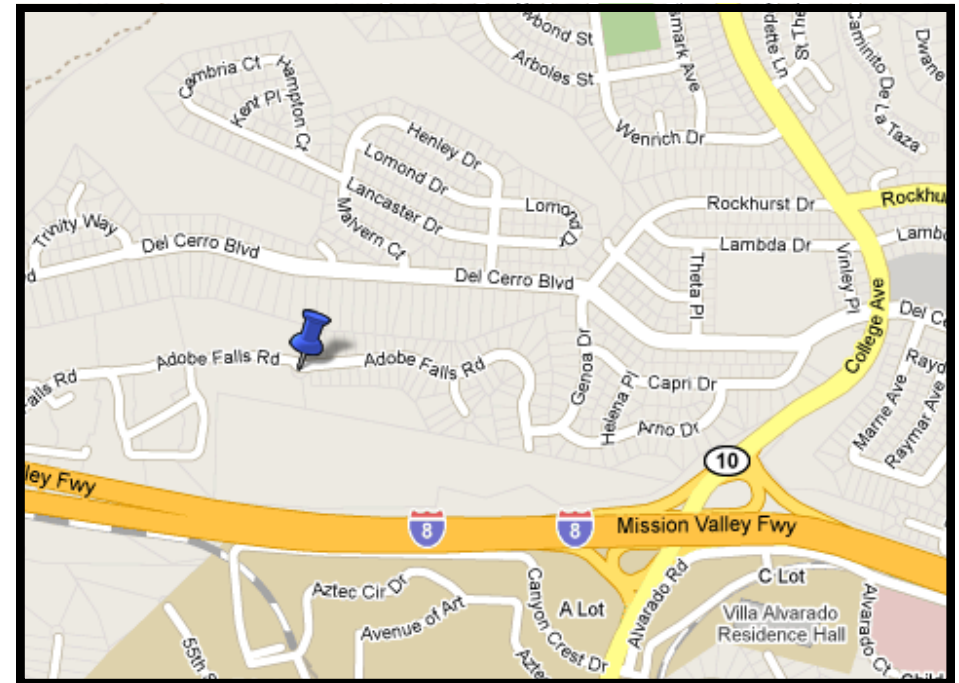
Pipelines should be buried underground. If you come across sewer pipes that have been exposed due to erosion, please let us know. Exposed pipes are more likely to crack and leak and should be reported.



# Adobe Falls Canyon

Adobe Falls Road  
San Diego, CA 92120

From Interstate 8, exit College Ave. and head north. Turn left on Del Cerro Blvd and left again onto Genoa Dr. At intersection, head right onto Mill Peak Rd (which becomes Adobe



**Note:** This trail is inaccessible when Alvarado Creek is above normal capacity, which occurs during and after heavy rainfall.

Poison Oak is prevalent along this trail and precautions should be taken.

# Manhole Guide

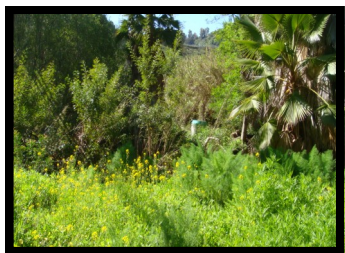
The following information will lead you to the various manholes throughout this canyon. Please read the 'Hiking Safety Tips' available at [www.sdoceans.org](http://www.sdoceans.org) before beginning your hike.

Due to vegetation growth and other, unforeseen changes, some manholes may not be immediately visible. If a manhole cannot be reached due to construction or certain environmental hazards, please make a note of it and move on to the next manhole on your list.



1. Manhole #94  
32° 78.21 N 117° 07.45 W

Head south, down hill. MH near corner of fence. If you look south across the creek, you may see MH#320 (later in the guide).



2. Manhole #92  
32° 78.19 N 117° 07.54 W

Return to the top of the slope and walk west along fence. Head south along the service road. MH is about 100 ft west of the road, north of the creek.



3. Manhole #91  
32° \_\_\_.\_\_\_ N 117° \_\_\_.\_\_\_ W

Continue walking 20 ft north, then west another 300 ft along the creek. MH is 20 ft west of concrete channel. Skip to MH#320, or continue on for a challenge.



4. Manhole #84  
32° 78.13 N 117° 07.67 W

Cross the creek if possible and climb slope adjacent to the concrete lined channel. Ascend a 4 foot embankment and walk south along fence to hole in fence. Head down slope and west to MH.



5. Manhole #85  
32° 78.11 N 117° 07.66 W

Walk carefully south along concrete channel then up slope toward another hole in the fence to find MH #85.



6. Manhole #86  
32° 78.06 N 117° 07.63 W

Head east through the hole in the fence, then walk south along the top edge of the ravine 200 feet to MH #86.



7. Manhole #87  
32° 78.01 N 117° 07.61 W

Continue south from MH #86 up hillside about 300 feet. MH #87 is surrounded by bushes.

**Watch for poison oak.**



8. Manhole #88  
32° 77.99 N, 117° 07.60 W

Turn around looping south, then east, then north to a location below previous MH, then east to the ravine edge, southwest up the hill to a hole in the highway access control fence.



9. Manhole #89  
32° 77.99 N, 117° 07.57 W

Head east, slightly downhill then slightly uphill towards fence about 100 feet. Watch for a slippery slope as you cross the concrete brow ditch. MH is next to the fence with overgrowth surrounding it.



10. Manhole #90  
32° 77.99 N 117° 07.52 W

Head northeast away from the fence 100 feet and then SE up the hill 100 feet toward the fence to find MH. Head north about 400 feet to a trail.



11. Manhole #320  
32° 78.18 N 117° 07.46 W

Follow trail north another 300 feet back to the main service road. Continue east. Take gravel path south 50 feet north of boulder on left.



12. Manhole #93  
32° 78.18 N 117° 07.46 W

From MH #320 & 93, return to the service road.



13. Manhole #95  
32° 78.11 N 117° 07.33 W

Walk SE for about 400 feet taking the right fork. MH on left.



14. Manhole #96  
32° 78.05 N 117° 07.23 W

Proceed another 375 feet SE along the trail to MH #96.



15. Manhole #316  
32° 78.03 N 117° 07.19 W

Continue another 100 feet SE along the trail to the final MH.

Walk another 25 feet up the road to get a glimpse and hear the sounds of Adobe Falls. It is known as the only year-round waterfall in the city limits.

Thank you for monitoring Adobe Falls Canyon!

Please be sure to submit your Canyon Watch Field Report online at [http://sdoceans.org/pollution\\_report\\_2.php](http://sdoceans.org/pollution_report_2.php) within 24 hours of your hike.

Volunteer submissions are the key to early detection and prevention of raw sewage from making its way into our ocean!



1875 Quivira Way, C-5 | San Diego, CA 92109  
P: (619) 523-1903 | F: (619) 523-1979

**Executive Director**

John Valencia, [john@sdoceans.org](mailto:john@sdoceans.org)

**Program and Outreach Director**

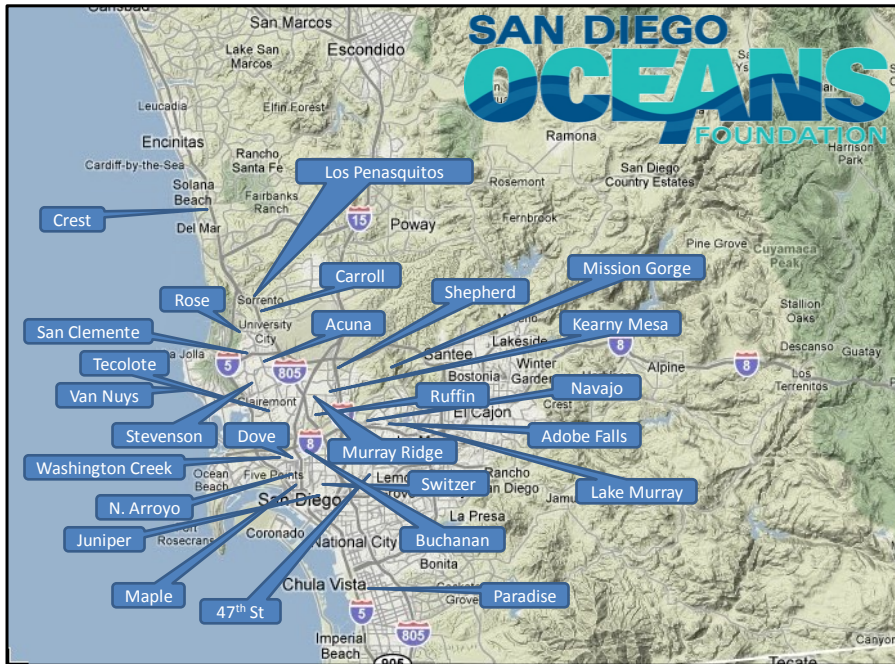
Cheryl Barnes, [cheryl@sdoceans.org](mailto:cheryl@sdoceans.org)

**Marketing and Development Director**

Heidi van Lydegraf, [heidi@sdoceans.org](mailto:heidi@sdoceans.org)

**Ocean In Motion Program Coordinator**

Zoe Dagan, [zoe@sdoceans.org](mailto:zoe@sdoceans.org)



Visit [www.sdoceans.org](http://www.sdoceans.org) to locate guides for other available canyons in San Diego County.

We rely on donations from people who wish to see the marine environment protected for its intrinsic value, for their enjoyment and for that of future generations.

To support SDOF programs, become a member or make a tax-deductible donation at: [www.sdoceans.org](http://www.sdoceans.org).